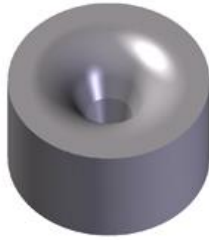




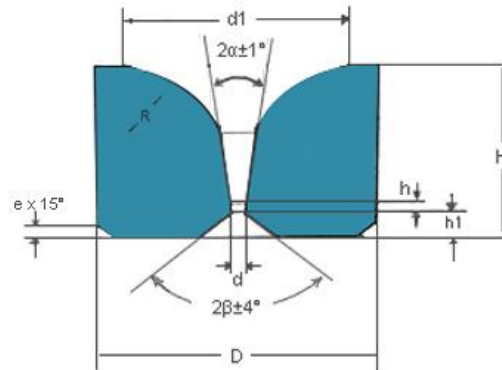
EJ Carbide Co., Ltd.

Zhuzhou, Hunan, China

EJ Carbide Regular Type Drawing



Type: EJ-LV



Type	Dimension (mm)						Reference dimension(mm)				
	D	d	d1	H	h1	h	$2\alpha^0$	$2\beta^0$	R	e	$\epsilon$
LV-0171514-1.2	17	1.2	13	15	3.0	0.9	$14^0$	$90^0$	10	1.2	$15^0$
LV-0171514-1.5	17	1.5	13	15	3.0	0.9	$14^0$	$90^0$	10	1.2	$15^0$
LV-0171514-2.0	17	2.0	13	15	3.0	1.0	$14^0$	$90^0$	10	1.2	$15^0$
LV-0171514-2.5	17	2.5	13	15	3.0	1.0	$14^0$	$90^0$	10	1.2	$15^0$
LV-0171514-3.0	17	3.0	13	15	3.0	1.0	$14^0$	$90^0$	10	1.2	$15^0$
LV-0171514-3.5	17	3.5	13	15	3.0	1.3	$14^0$	$90^0$	10	1.2	$15^0$
LV-0171514-4.0	17	4.0	13	15	3.0	1.5	$14^0$	$90^0$	10	1.2	$15^0$
LV-0191712-1.0	19	1.0	15	17	2.5	1.0	$12^0$	$85^0$	8.5	1.5	$15^0$
LV-0191712-1.3	19	1.3	15	17	2.5	1.0	$12^0$	$85^0$	8.5	1.5	$15^0$
LV-0191712-1.5	19	1.5	15	17	2.5	1.2	$12^0$	$85^0$	8.5	1.5	$15^0$
LV-0191712-2.0	19	2.0	15	17	2.5	1.3	$12^0$	$85^0$	8.5	1.5	$15^0$
LV-0191712-3.0	19	3.0	15	17	2.5	1.5	$12^0$	$85^0$	8.5	1.5	$15^0$
LV-0191712-4.0	19	4.0	15	17	2.5	1.7	$12^0$	$85^0$	8.5	1.5	$15^0$
LV-0221816-1.5	22	1.5	18	18	3.6	1.0	$16^0$	$90^0$	12	1.5	$15^0$
LV-0221816-2.0	22	2.0	18	18	3.6	1.0	$16^0$	$90^0$	12	1.5	$15^0$

EJ Carbide Co., Ltd. --- Solve your wearing problem with carbides

Web: [www.ejcarbides.com](http://www.ejcarbides.com) Email: [info@ejcarbides.com](mailto:info@ejcarbides.com) Tel: +86 0731 22995400 Mob: +86 186 7333 9477